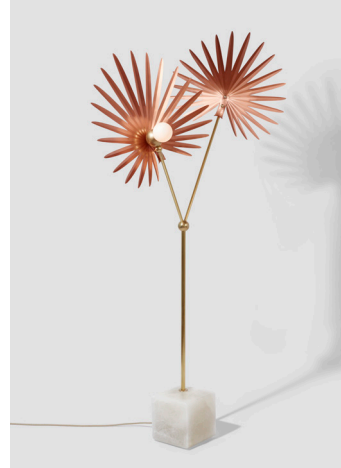


ROSIE LI



Inez 02 Floor Lamp Installation Instructions

SAFETY

THIS PRODUCT MUST BE INSTALLED IN ACCORDANCE WITH THE APPLICABLE INSTALLATION CODE BY A PERSON FAMILIAR WITH THE CONSTRUCTION AND OPERATION OF THE PRODUCT AND THE HAZARDS INVOLVED

BE SURE THE ELECTRICITY TO THE WIRES YOU ARE WORKING ON IS SHUT OFF; EITHER THE FUSE IS REMOVED OR THE CIRCUIT BREAKER IS TURNED OFF. TURNING THE POWER OFF USING THE LIGHT SWITCH IS NOT SUFFICIENT TO PREVENT ELECTRICAL SHOCK.

WARNING! – TO REDUCE THE RISK OF FIRE, ELECTRIC SHOCK, OR PERSONAL INJURY:

Turn off/unplug lamp and allow to cool before replacing bulb.

Do not look directly at lighted bulb.

Keep materials that burn easily away from lighted bulb.

Improper use of the bulbs can result in shattering, causing injury and equipment damage.

NOTE: The important safeguards and instructions appearing in this manual are not meant to cover all possible conditions or situations that may occur. It must be understood that common sense, caution, and care, are factors which cannot be built into any product. These factors must be supplied by the person(s) installing this unit.

Please read through all instructions carefully before attempting fixture installation.

Leaves and bulbs parts MUST be applied to fixture AFTER final placement.

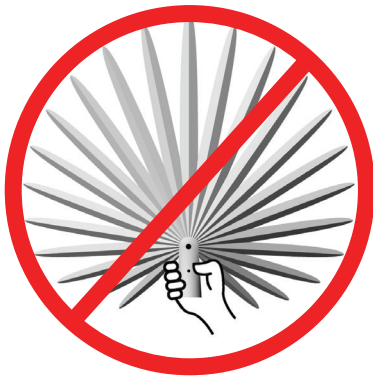
Always wear provided gloves when handling fixture. To avoid damage to metal finish, keep fixture wrapping intact during installation; unwrap areas as needed.

1) This fixture is shipped without leaves and bulbs. Move lamp into final position BEFORE leaves and bulbs are re-installed. Lamp should only be lifted and handled by alabaster base.

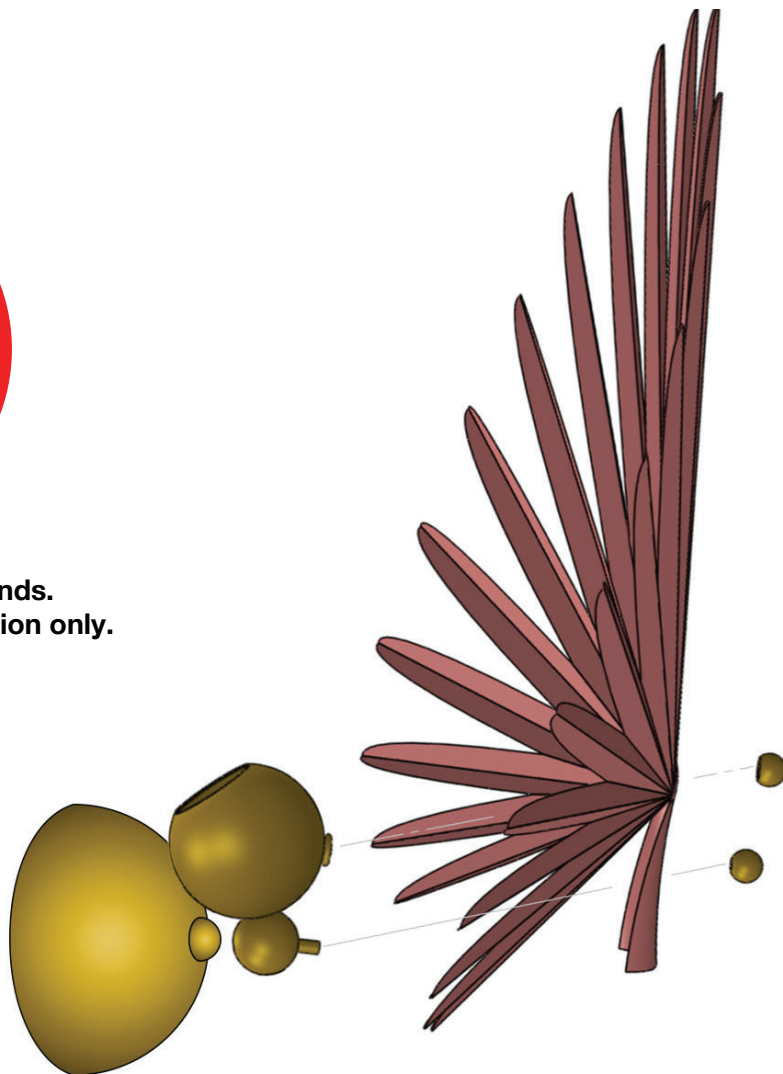
2) Locate Thumbscrew Balls on fixture frame. Remove each set prior to installing its leaf.

3) Install leaves onto fixture frame using 2x Thumbscrew Balls, DO NOT hold palm by its stem (see diagram below).

4) Install light bulbs.



**Please handle with two hands.
DO NOT hold by stem portion only.**



Cleaning

Use only soft, dry cloth to dust and clean fixture. Regular cleaning and routine maintenance will reduce the need for deep cleaning. Avoid use of chemicals or abrasive cleaners as it may damage metal and glass finish.